

1
.1.4



Technical Data

For detailed data and product description refer to the data sheets at www.pepperl-fuchs.com

General Data

Switching element function	NAMUR, NC
Type of voltage	DC
Nominal voltage	8.2 V (R _i approx. 1 kΩ)
Measuring cylinder	9S20K
Current consumption	
Measuring plate not detected	≥ 3 mA
Measuring plate detected	≤ 1 mA
Ambient temperature	-25 ... 70 °C (-13 ... 158 °F)
Housing material	PBT
Protection degree	IP67
Connection type	cablе PVC , 2 m



Properties

- Up to Ø43 mm inside diameter versions
- 3 mm / 6 mm / 9 mm minimum target diameter
- 9S20K targets
- Very fast response
- DC, NAMUR interface

Your Benefit

- EX approved sensor applicable up to zone 1

Model Number

		RJ15-14-N	RJ15-N	RJ21-N	RJ43-N
Inside diameter	15 mm	●	●		
	21 mm			●	
	43 mm				●
Measuring cylinder	9S20K	●	●	●	●
	Diameter				
Length	3 mm	●	●		
	6 mm			●	
	9 mm				●
	6 mm	●			
	4 mm		●		
Switching frequency	12 mm			●	
	18 mm				●
	0 ... 1000 Hz			●	
	0 ... 1500 Hz	●	●		
	0 ... 500 Hz				●

Use in the Hazardous Area

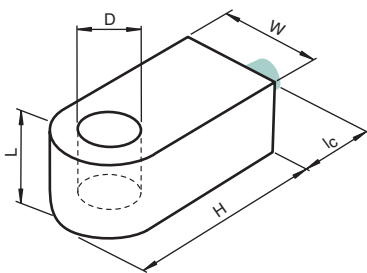
Use in the hazardous area	see instruction manuals	●	●	●	●
Category	2G	●	●	●	●

Approvals and Certificates

Control drawing	116-0165F		●	●	●
UL approval	cULus Listed, General Purpose	●	●	●	●
CSA approval	cCSAus Listed, General Purpose	●	●	●	●

Dimensions

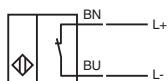
Length L [mm]	20			
Width W [mm]	25	29	45	70
Height H [mm]	32.5	45	80	100
Inside diameter D [mm]	15		21	
Connector area l _c [mm]	0			



Electrical Connection



RJ15-14-N
RJ15-N
RJ21-N
RJ43-N





Technical Data

For detailed data and product description refer to the data sheets at www.pepperl-fuchs.com

General Data

Switching element function	NAMUR, NC
Type of voltage	DC
Nominal voltage	8.2 V (R _i approx. 1 kΩ)
Current consumption	
Measuring plate not detected	≥ 3 mA
Measuring plate detected	≤ 1 mA
Ambient temperature	-20 ... 65 °C (-4 ... 149 °F)
Housing material	PBT
Protection degree	IP67
Connection type	cable PVC , 2 m



Properties

- Ø10 mm and Ø15 mm inside diameter versions
- 2.5 mm / 3 mm minimum target diameter
- 9S20K targets
- Very fast response
- DC, NAMUR interface

Your Benefit

- EX approved sensor applicable up to zone 1

Model Number

		RC10-14-N0	RC15-14-N0
Inside diameter	10 mm	●	
	15 mm		●
Measuring cylinder	9S20K	●	●
	Diameter		
	2.5 mm	●	
	3 mm		●
Length	4 mm	●	●
Switching frequency	0 ... 1500 Hz		●
	0 ... 2000 Hz	●	
Suitable for 2:1 technology	✓, Reverse polarity protection diode not required	●	

Use in the Hazardous Area

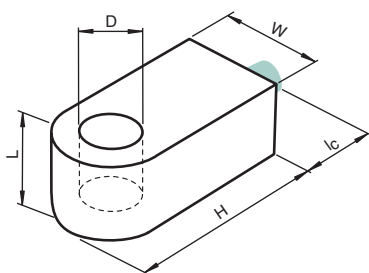
		RC10-14-N0	RC15-14-N0
Use in the hazardous area	see instruction manuals	●	●
Category	2G	●	●

Approvals and Certificates

		RC10-14-N0	RC15-14-N0
Control drawing	116-0165F	●	●
UL approval	cULus Listed, General Purpose	●	●
CSA approval	cCSAus Listed, General Purpose	●	●

Dimensions

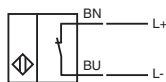
	RC10-14-N0	RC15-14-N0
Length L [mm]		20
Width W [mm]		25
Height H [mm]		32.5
Inside diameter D [mm]	10	15
Connector area l _c [mm]		0



Electrical Connection



RC10-14-N0
RC15-14-N0



Date of issue 04/08/2015

Refer to "General Notes Relating to Pepperl+Fuchs Product Information".

Pepperl+Fuchs Group
www.pepperl-fuchs.com

USA: +1 330 486 0001
fa-info@us.pepperl-fuchs.com

Germany: +49 621 776 4411
fa-info@de.pepperl-fuchs.com

Singapore: +65 6779 9091
fa-info@sg.pepperl-fuchs.com

Courtesy of Steven Engineering, Inc - (800) 258-9200 - sales@steveng.com - www.steveng.com

1
.1.4



Proximity Sensors, Inductive Sensors, ring types

Properties

- Ø10 mm and Ø15 mm inside diameter versions
- 2.5 mm / 3 mm minimum target diameter
- Ferrous targets
- Very fast response
- DC, bistable NAMUR interface

Your Benefit

- Direction detection due to bistable switching behavior
- EX approved sensor applicable up to zone 1

Technical Data

For detailed data and product description refer to the data sheets at www.pepperl-fuchs.com

General Data

Switching element function	NAMUR, bistable
Type of voltage	DC
Nominal voltage	8.2 V (R _i approx. 1 kΩ)
Current consumption	
Traverse B	3 mA
Traverse A	1 mA
Housing material	PBT
Protection degree	IP67
Connection type	cable PVC , 2 m



Model Number	RC10-14-N3	RC15-14-N3
Inside diameter	●	●
Measuring cylinder	●	●
Diameter	●	●
Length	●	●
3 mm		●
4 mm		●
Passage speed	●	●
≤ 10 m/s		●
Ambient temperature	●	●
-20 ... 100 °C (-4 ... 212 °F)		●
-20 ... 70 °C (-4 ... 158 °F)		●

Use in the Hazardous Area

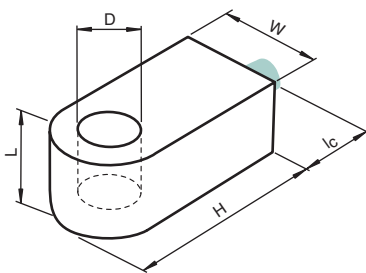
Use in the hazardous area	see instruction manuals	●	●
Category	2G	●	●

Approvals and Certificates

Control drawing	116-0165F	●	●
UL approval	cULus Listed, General Purpose	●	●
CSA approval	cCSAus Listed, General Purpose	●	●

Dimensions

Length L [mm]	20	
Width W [mm]	25	
Height H [mm]	32.5	
Inside diameter D [mm]	10	15
Connector area l _c [mm]	0	



Electrical Connection

